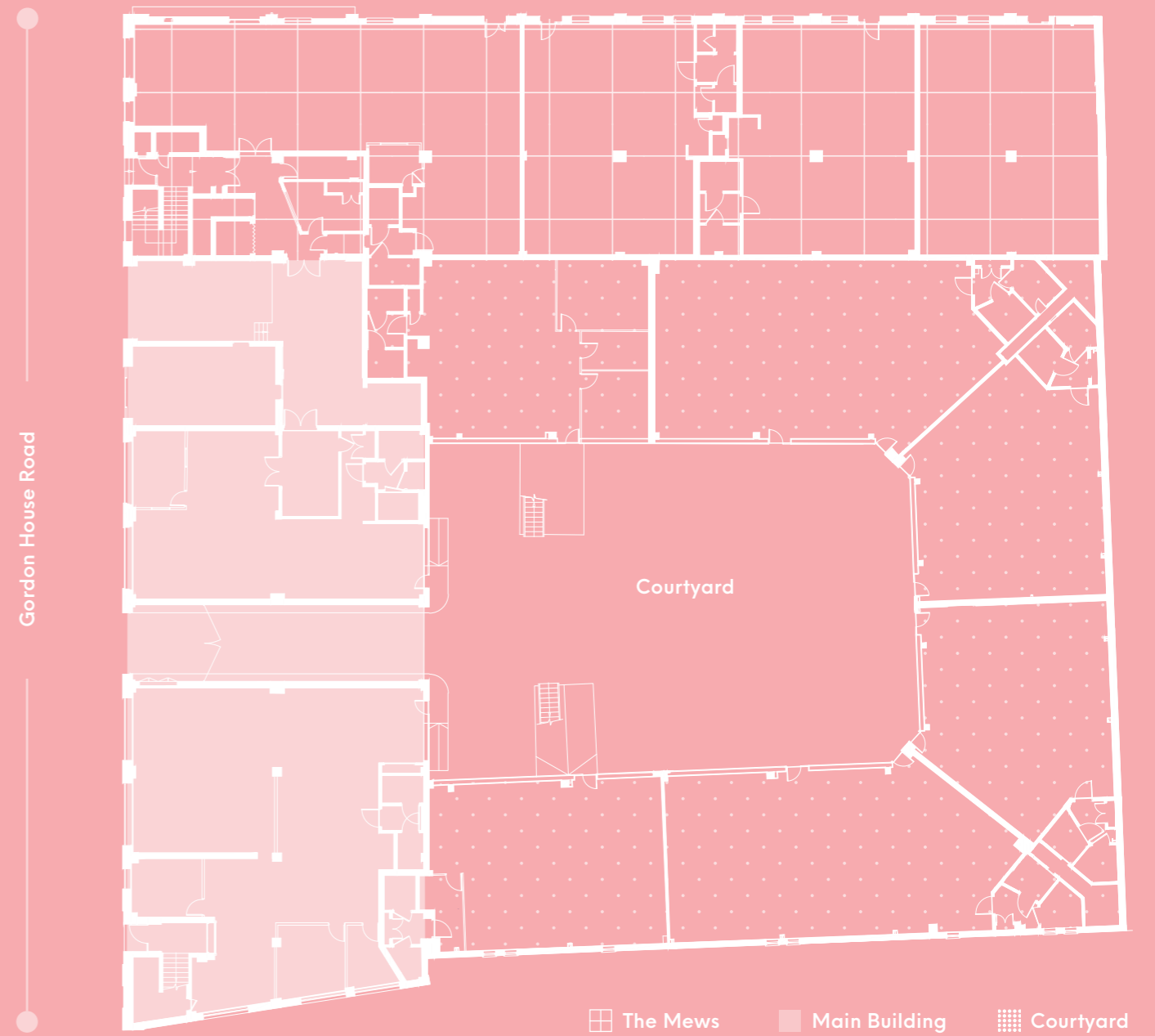


SPECTRUM HOUSE IS A PROMINENT AND ATTRACTIVE WAREHOUSE BUILDING FOCUSED AROUND A CENTRAL COURTYARD

Spectrum House offers a range of newly refurbished units in a variety of different sizes. Tenants have a unique opportunity to benefit from a traditional lease within a vibrant community. The workspace allows tenants to retain their brand identity and independence whilst still benefiting from a well managed building.



THE WORKSHOPS/STUDIOS PROVIDE A SPECIFICATION THAT INCLUDES:

- Newly refurbished
- Perimeter trunking
- Suspended lighting
- New kitchenette
- Comfort cooling/heating
- Parquet flooring
- 24 hour access
- CCTV
- 13 car parking spaces
- Fitted options available
- Cycle storage
- High speed fibre broadband



OUT & ABOUT

- 1 Rosella
- 2 The Vine
- 3 The Bull and Last
- 4 Pizza East
- 5 Southampton Arms
- 6 02 Forum Kentish Town
- 7 Kentish Town City Farm
- 8 Hampstead Heath
- 9 Parliament Hill Lido
- 10 The Village Restaurant
- 11 Carrots & Daikon
- 12 The Queen of Sheba
- 13 Patron Cave a Manger
- 14 The Junction Tavern
- 15 The Old Oak Inn
- 16 The Little Oak Coffee
- 17 Ladies & Gentleman
- 18 Bull & Gate



🚇
KINGS CROSS
ST PANCRAS
15 MINS

🚇
OXFORD CIRCUS
12 MINS

🚇
BANK
28 MINS

🚇
PADDINGTON
32 MINS

✈️
LONDON
CITY AIRPORT
41 MINS



SCOTT WARD REECE
D: 020 7614 0902
M: 07908 679 410
scott.wardreece@strettons.co.uk

**EDWARD CHARLES
& PARTNERS W1**
CHARTERED SURVEYORS

SEAN CUNNINGHAM
D: 020 7009 2310
M: 07827 985 858
scunningham@edwardcharles.co.uk

HAMISH CUMING
D: 020 7659 9455
M: 07917 683 207
hcuming@wbproperties.com

Misrepresentation Act: Whilst the statements contained in these particulars are given in good faith and as a general guide to the property they do not form any part of an offer or contract. Neither the lessor, or any person in the employment of Westbrook Properties has any authority to make or give any representation or warranty whatsoever in relation to this property. Interested parties must satisfy themselves by inspection or otherwise as to the correctness of these particulars. January 2019. Designed & Produced by **CORMACK** - cormackadvertising.com